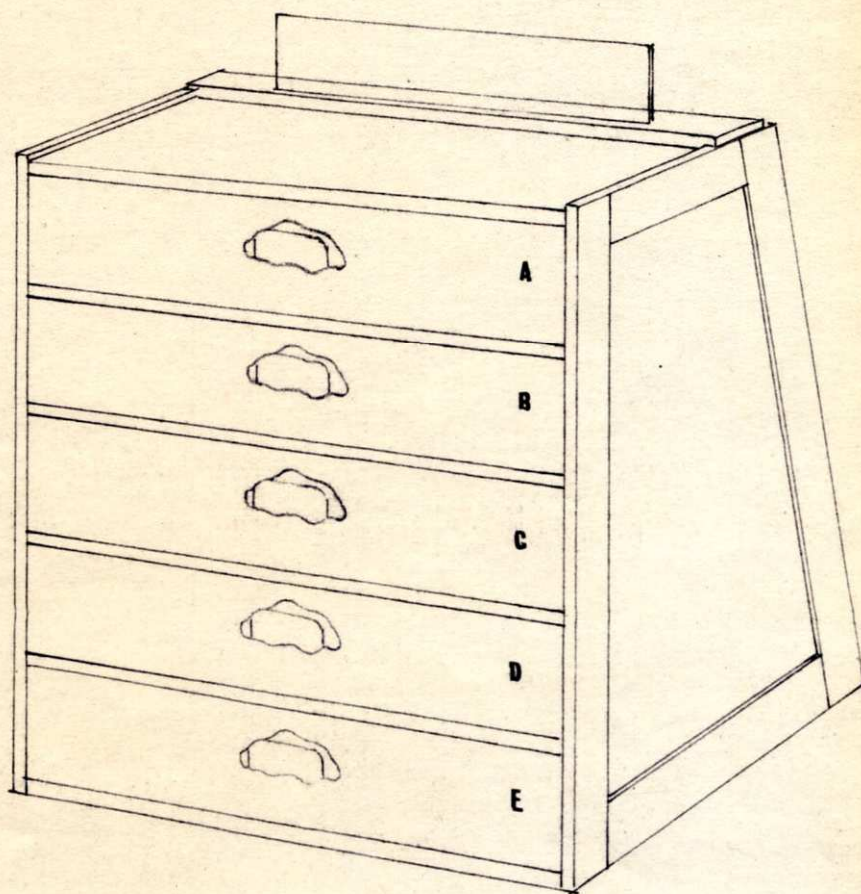
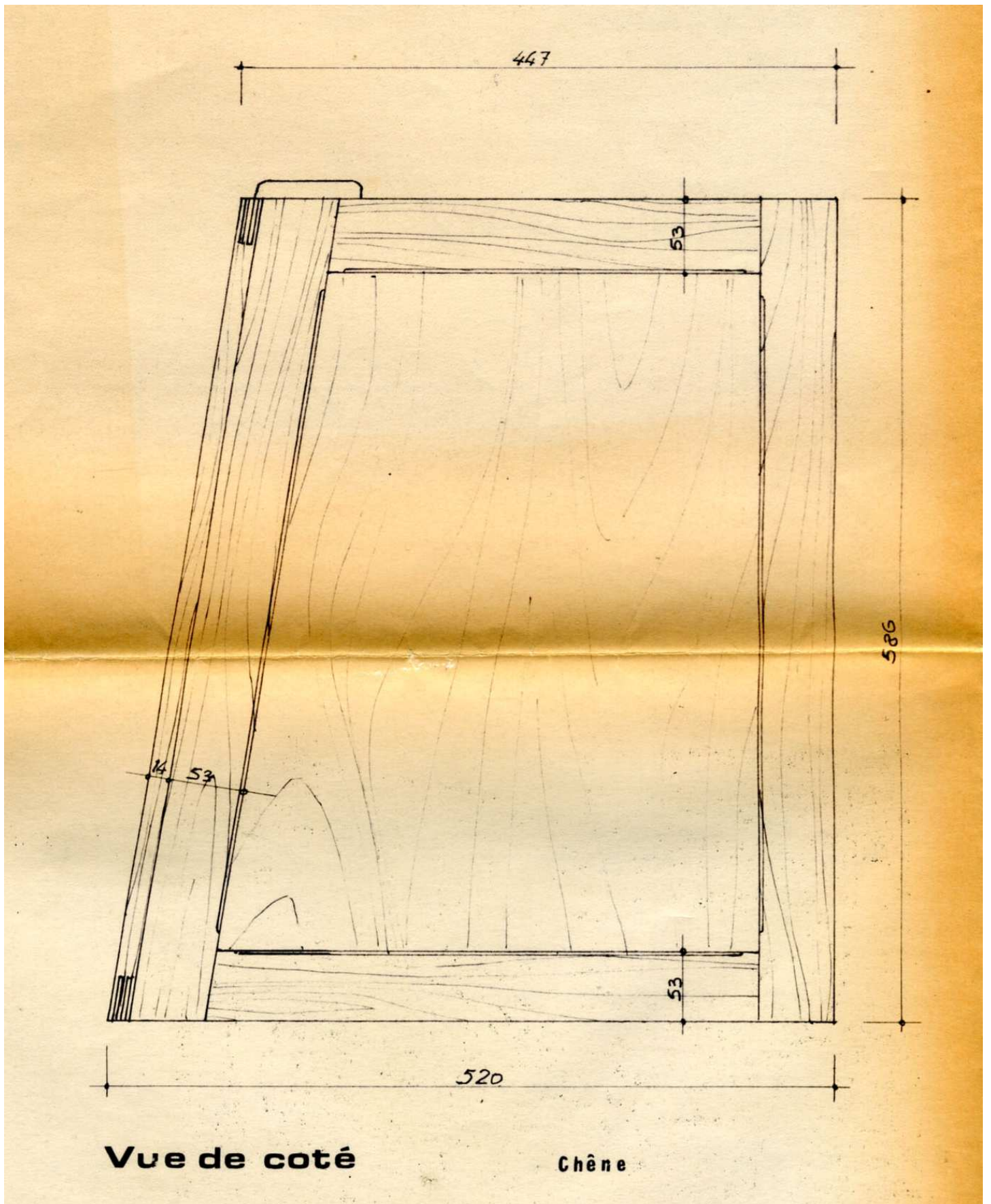
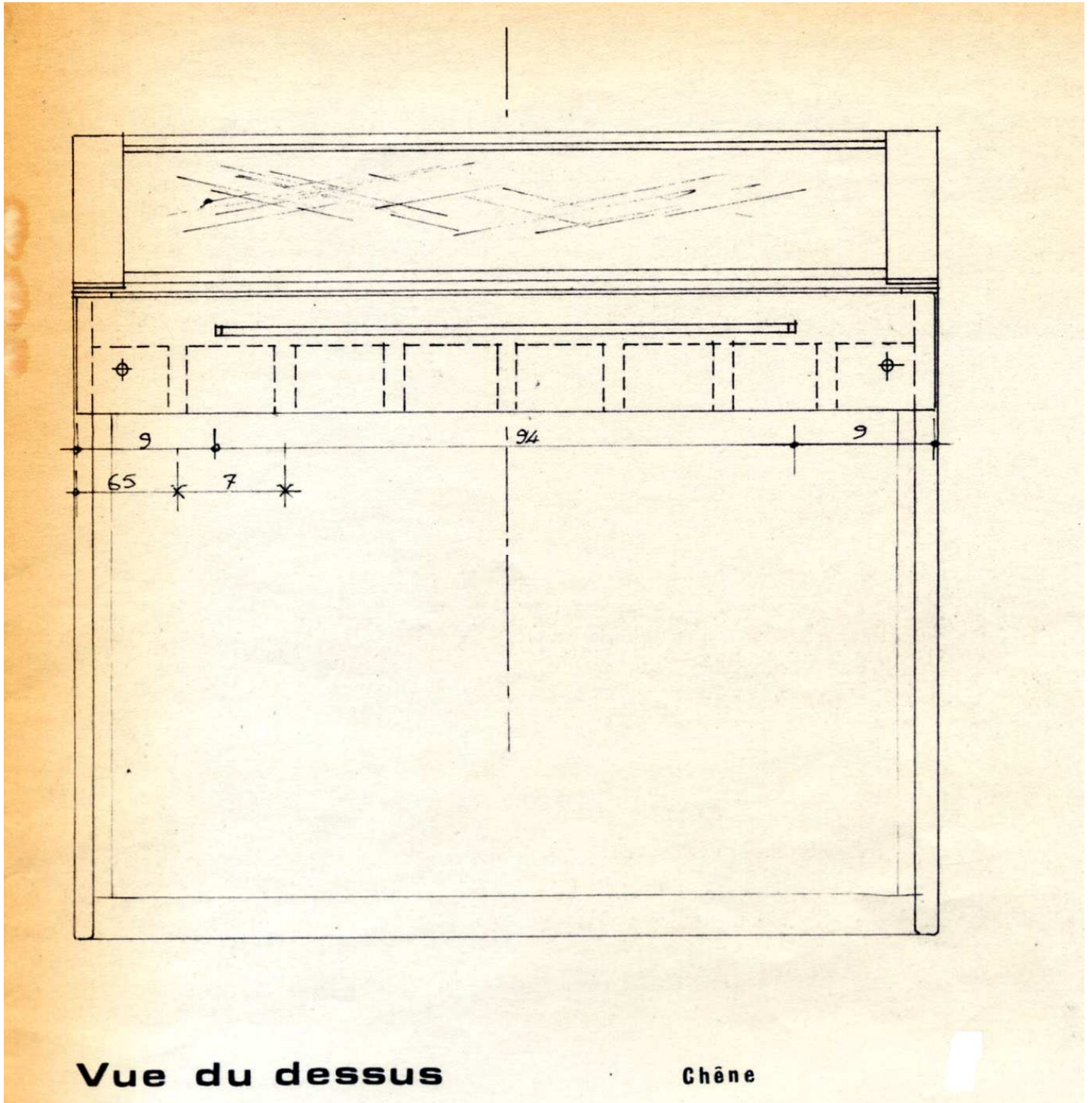


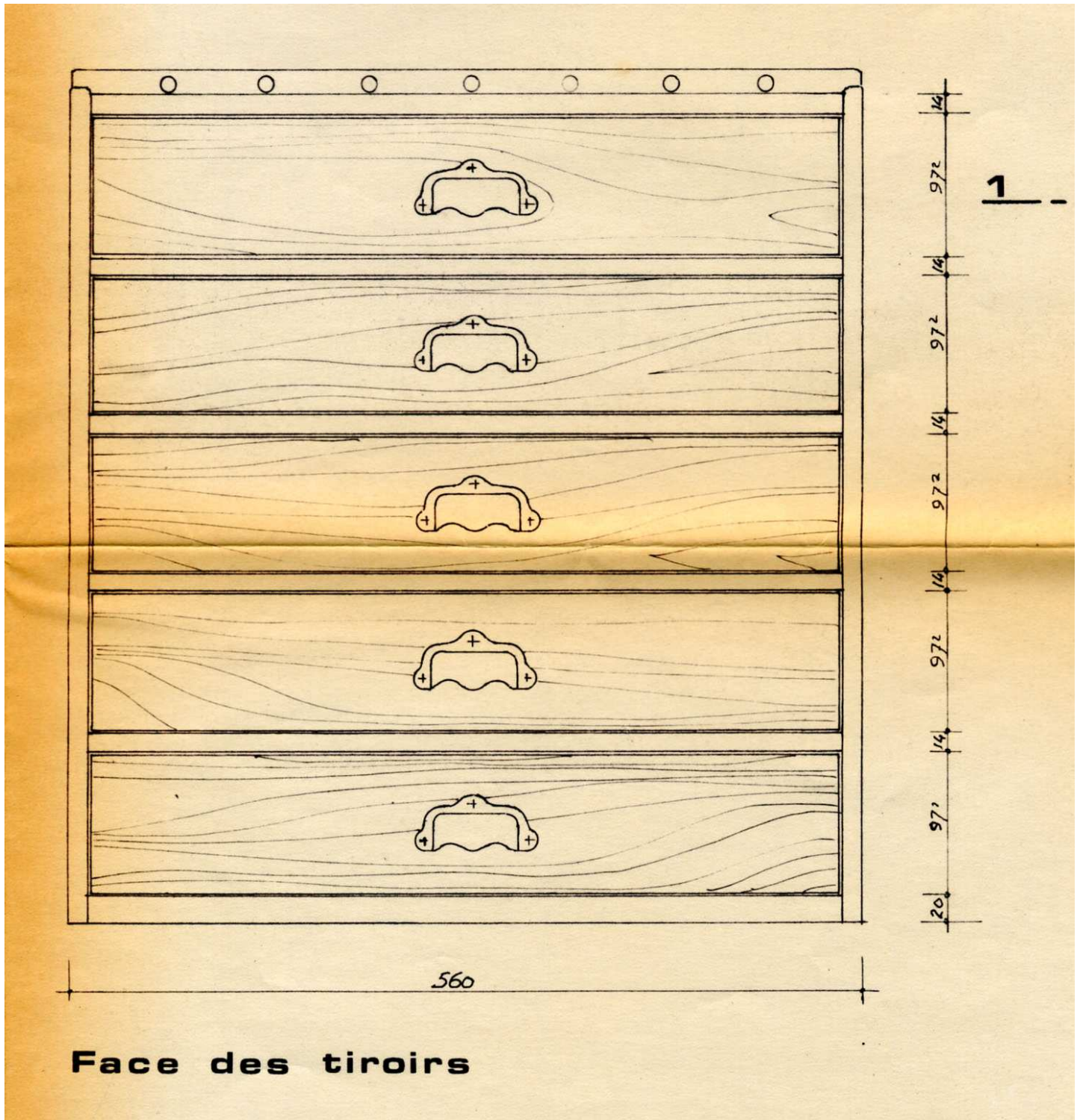
VITRINE MECCANO année 1945 (env.)

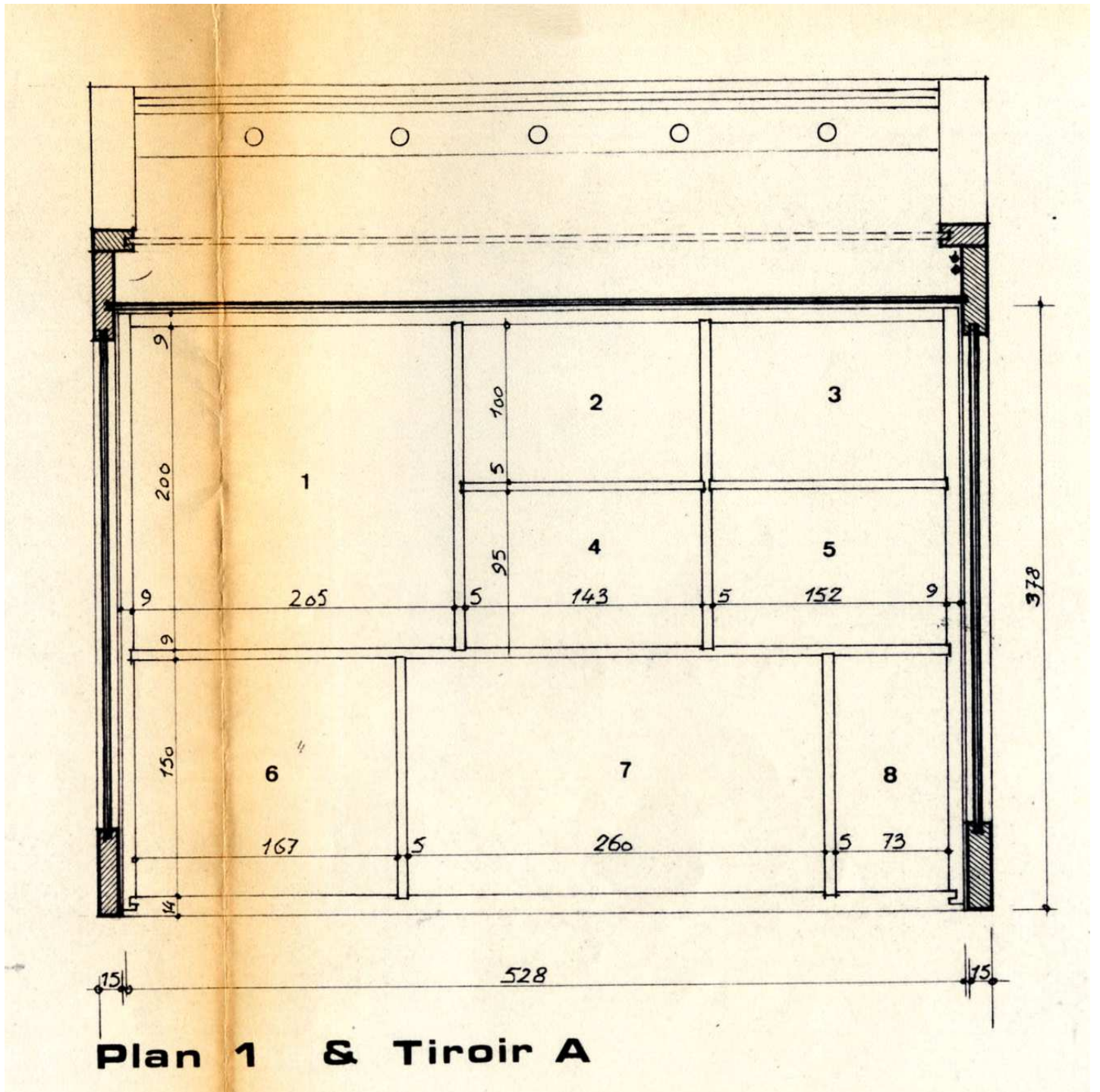
**Echelle : 1/4 — relevé du meuble dressé, le 19 Août 1983
par CAM n°114 L.FLECK**

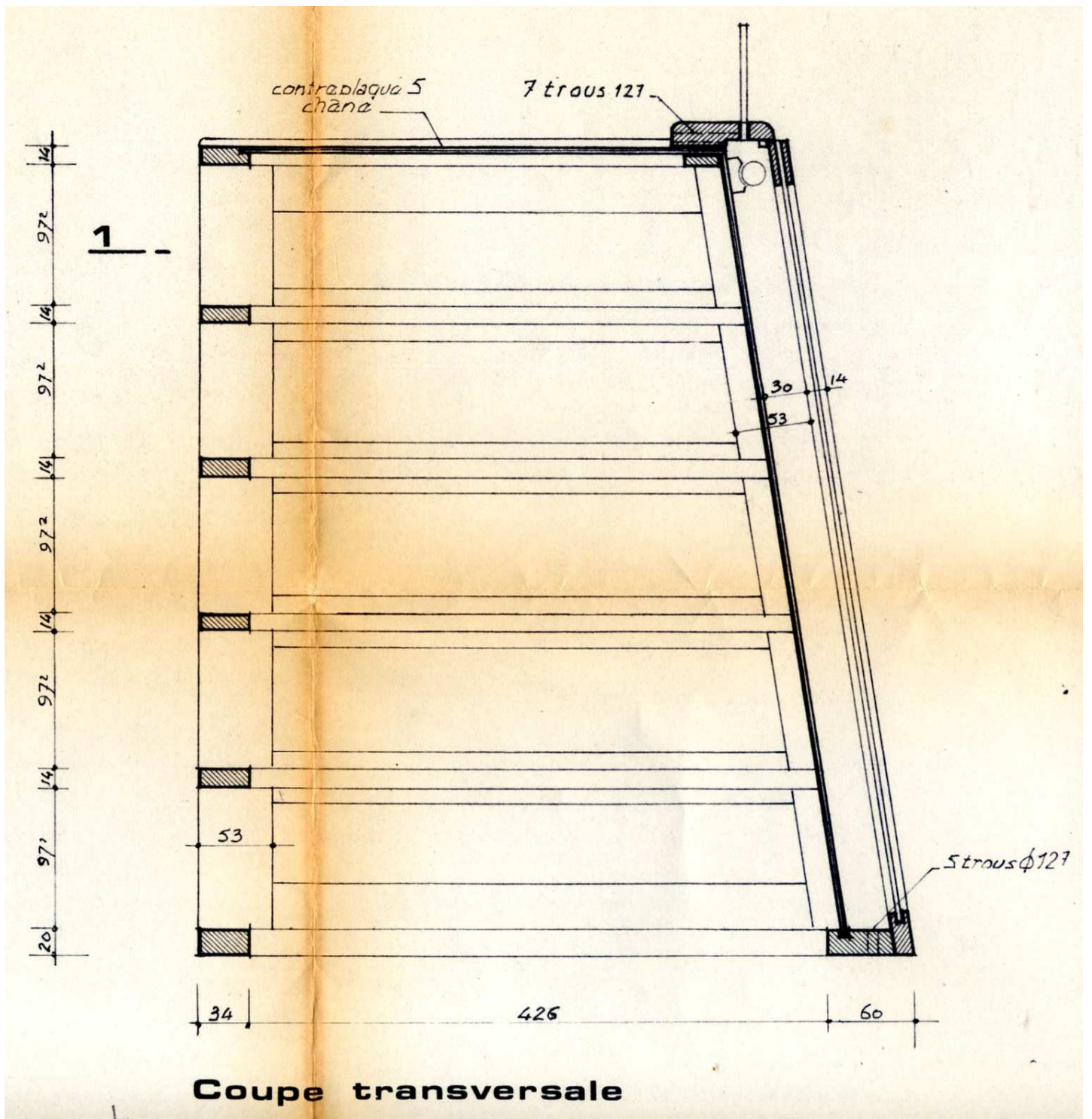




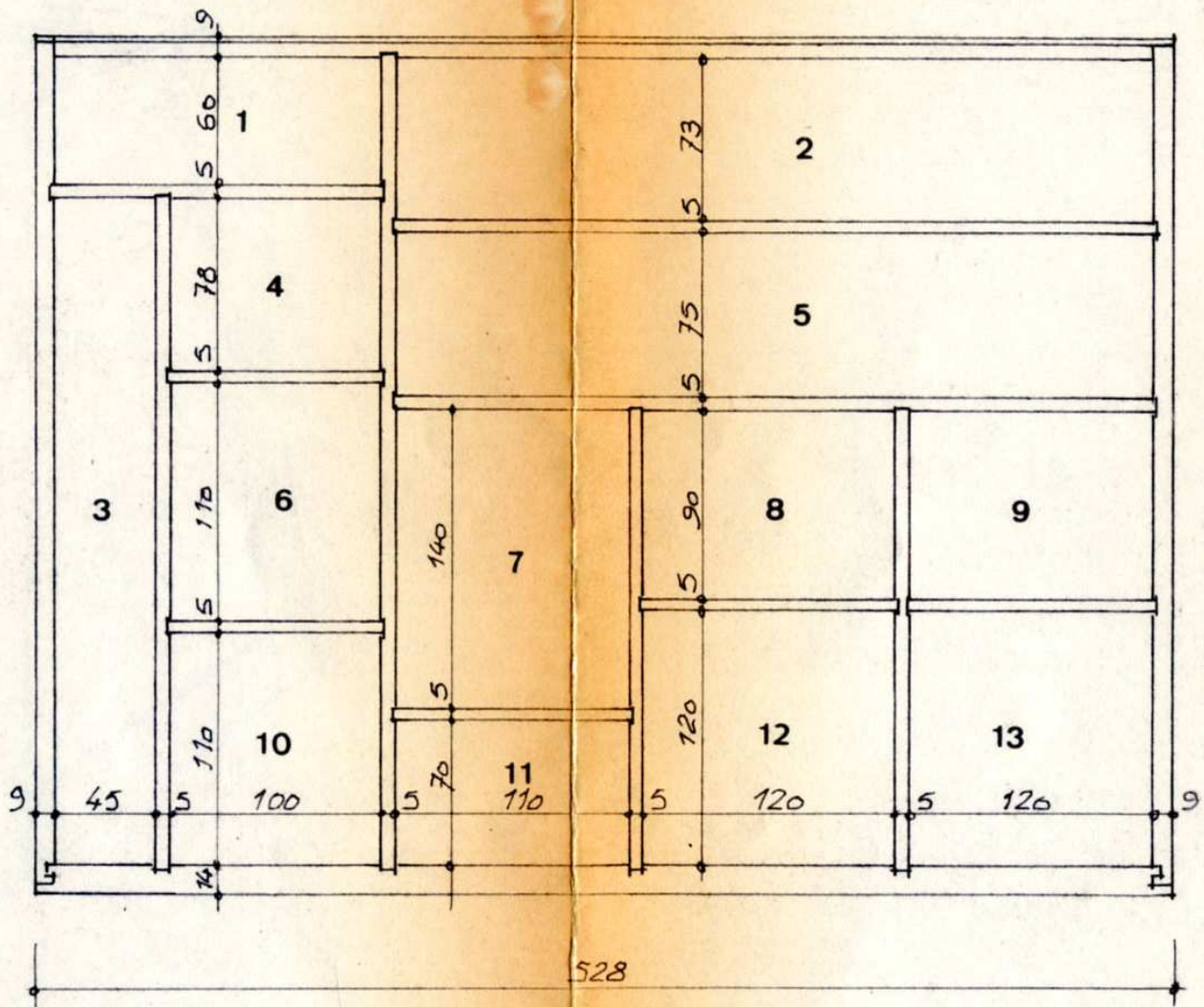




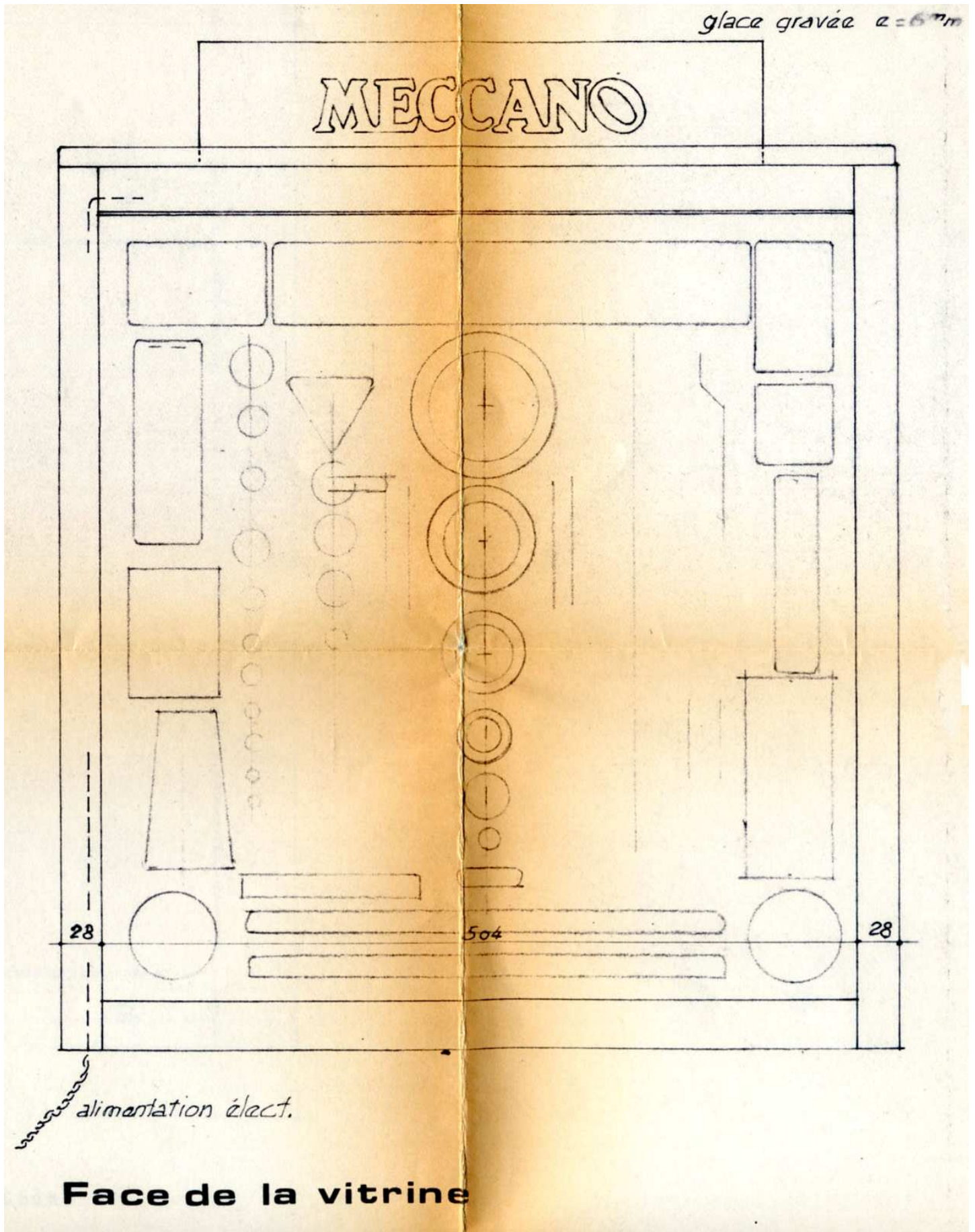


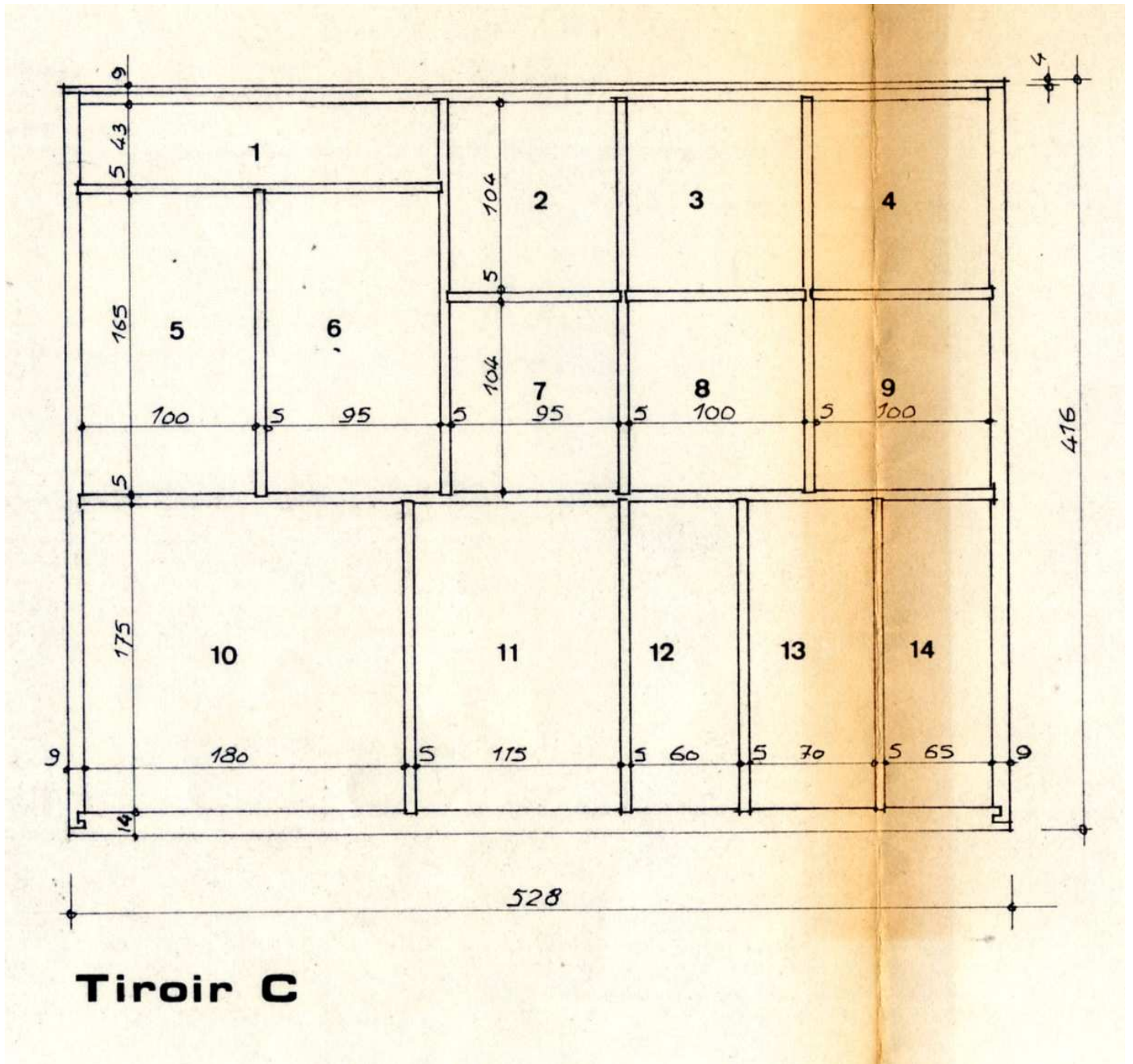


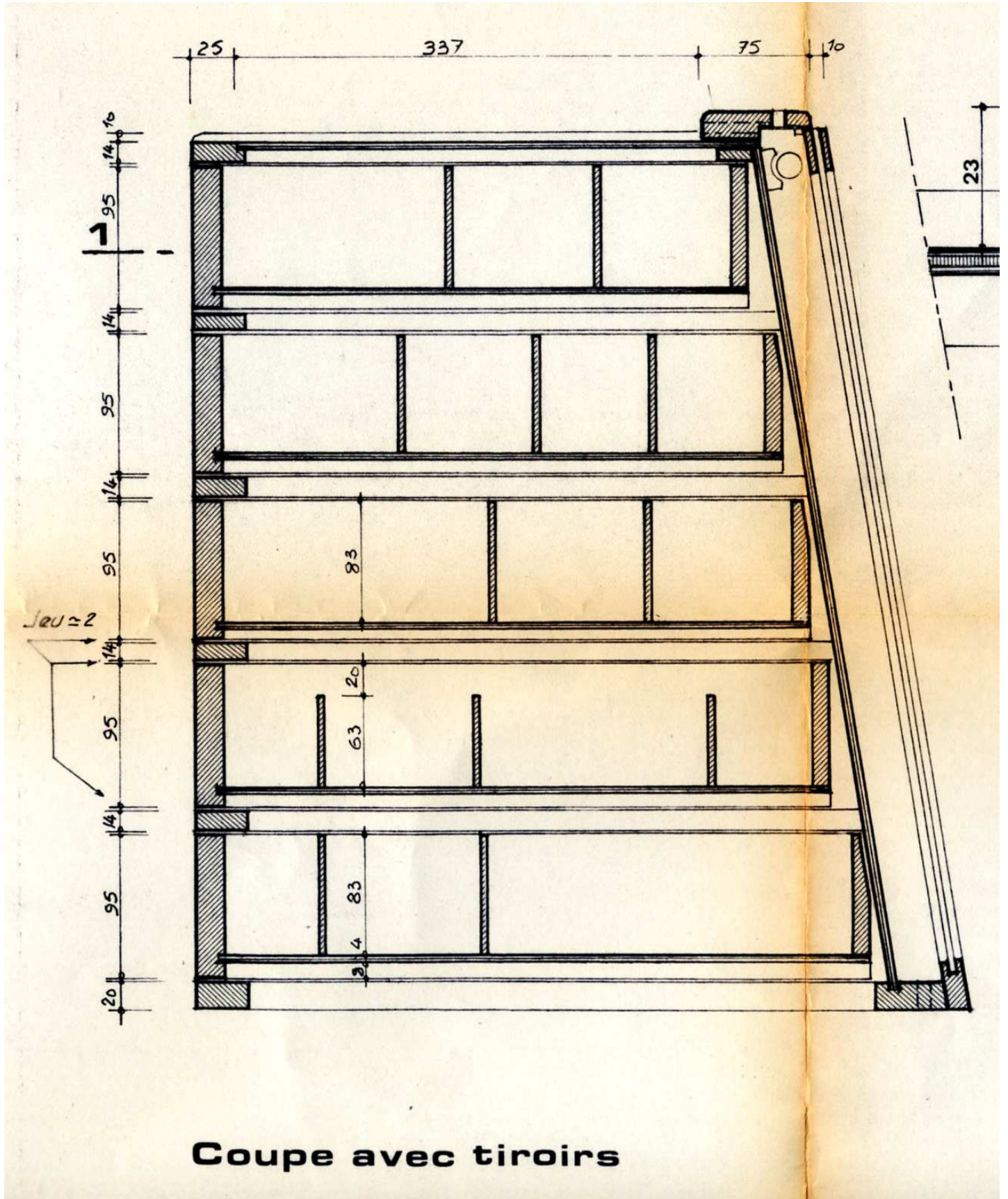
Face en chêne
Côtés en hêtre
Séparations en acajou

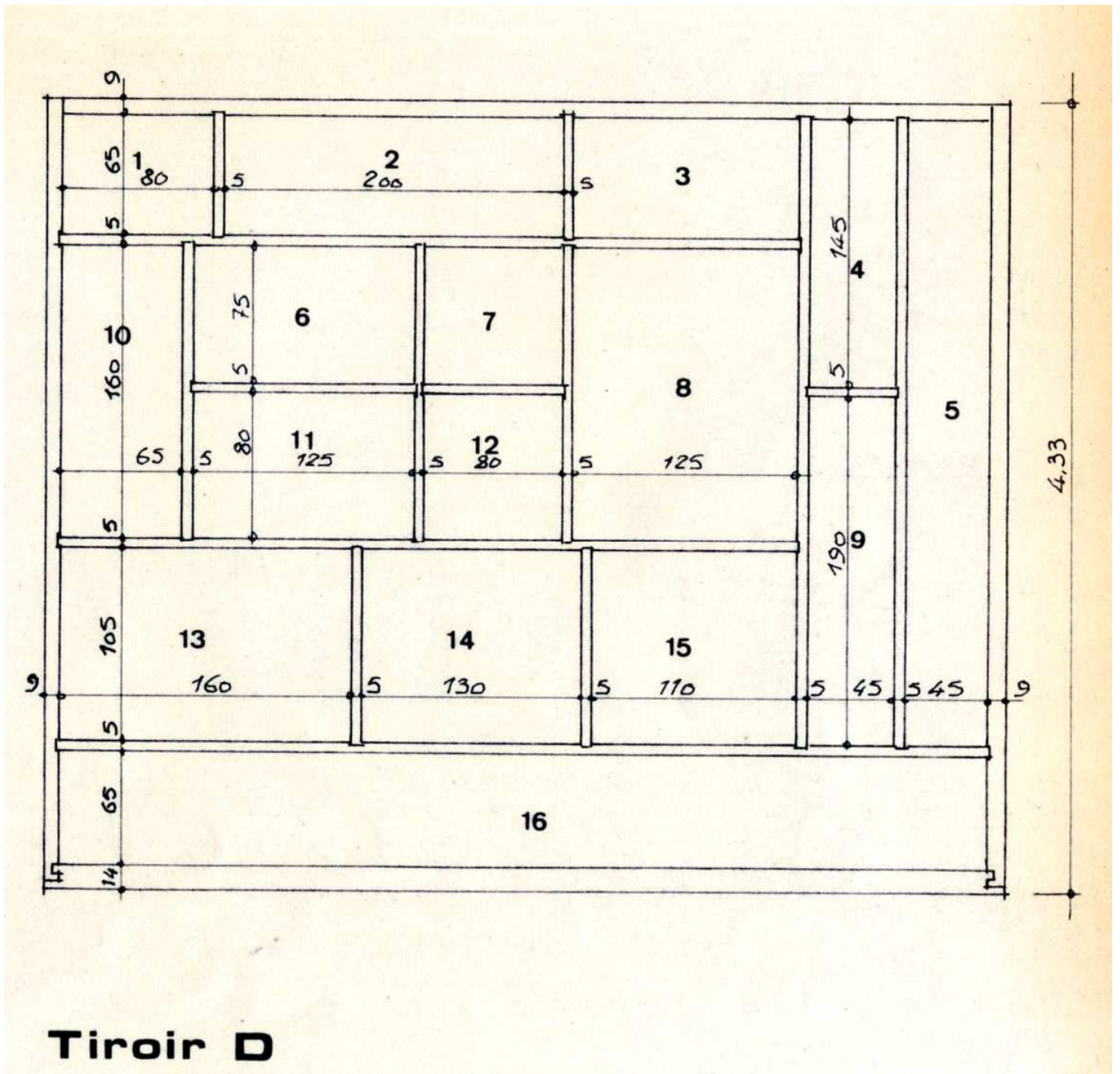


Tiroir B

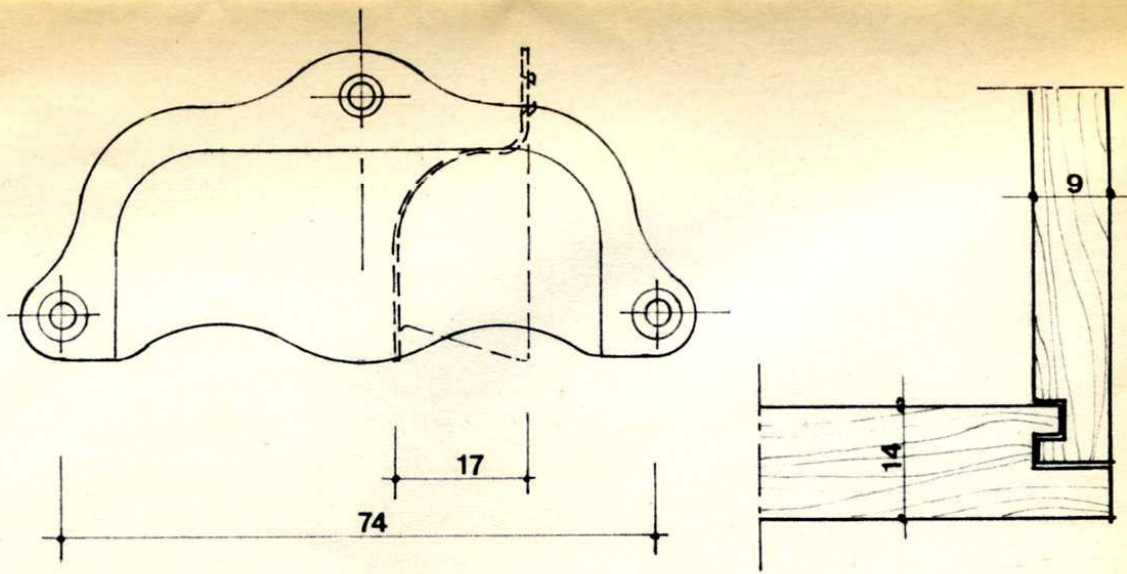
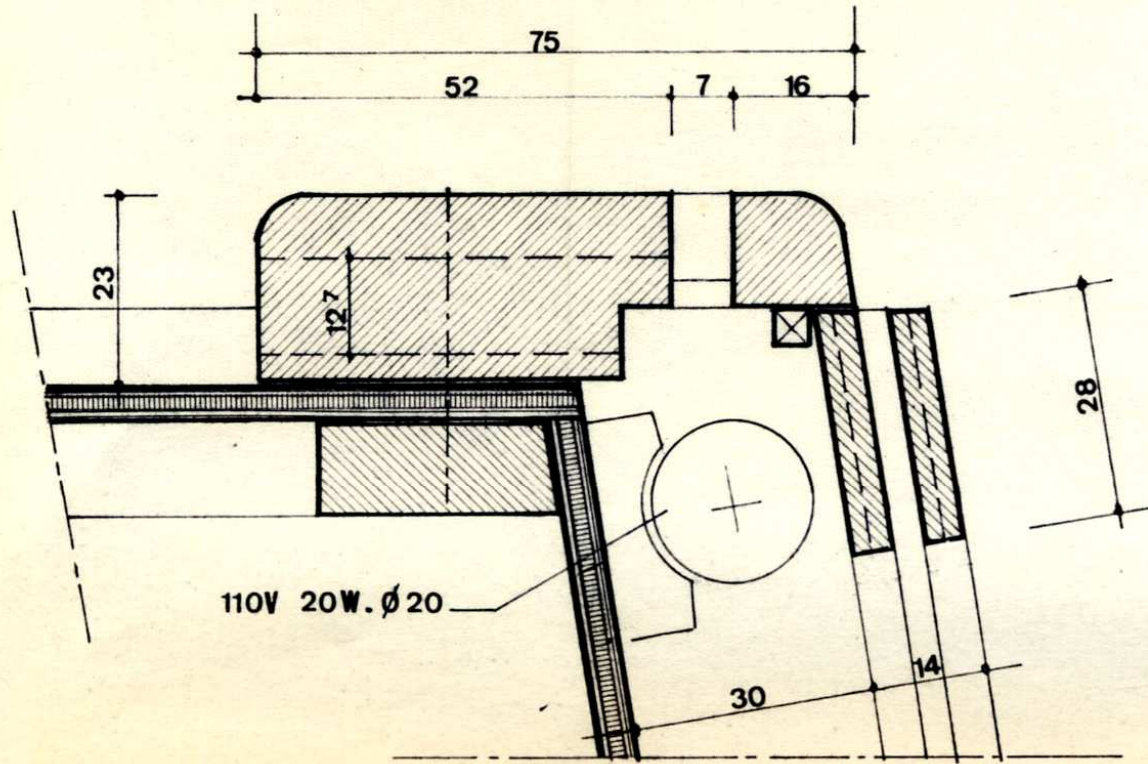




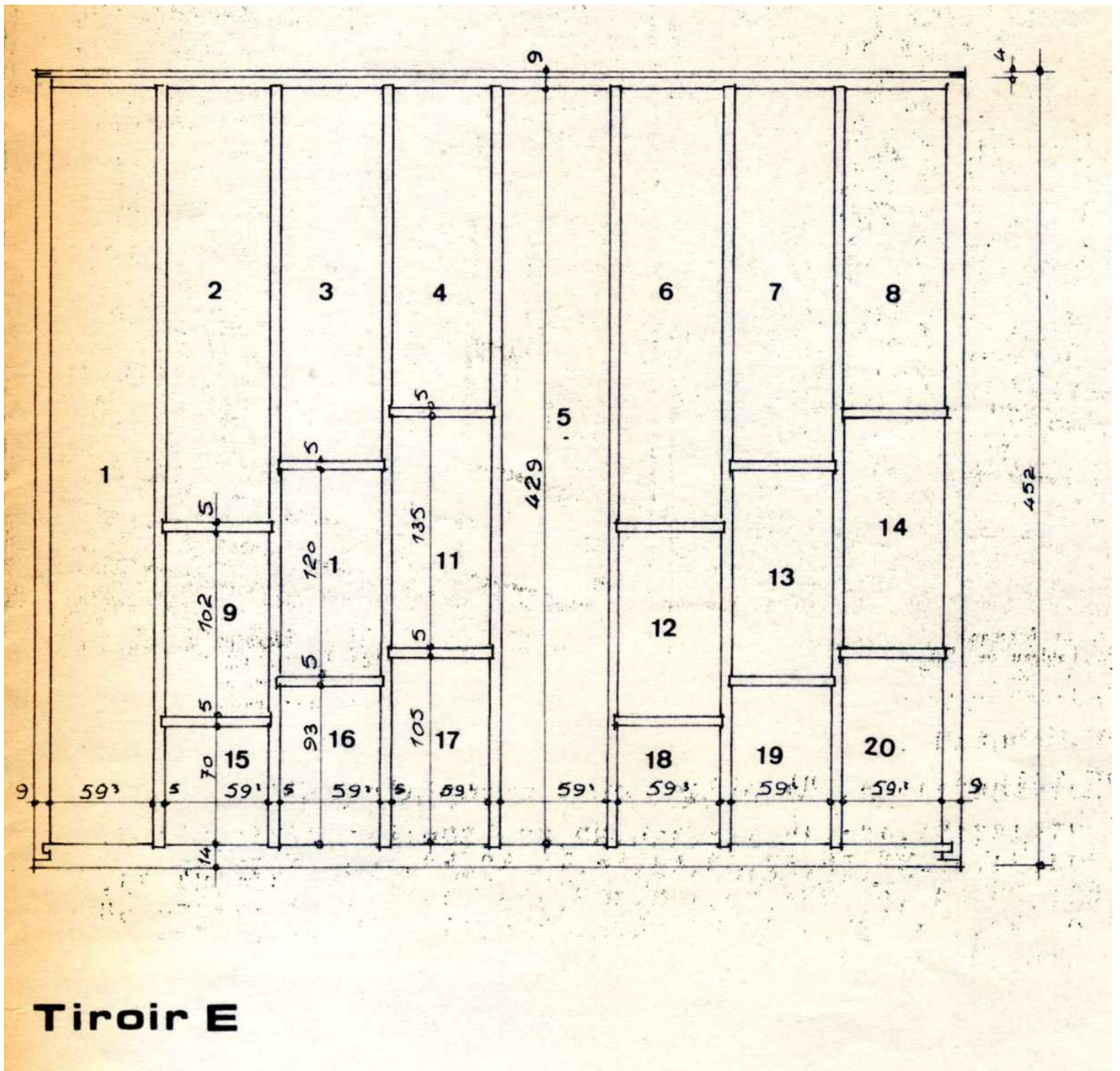


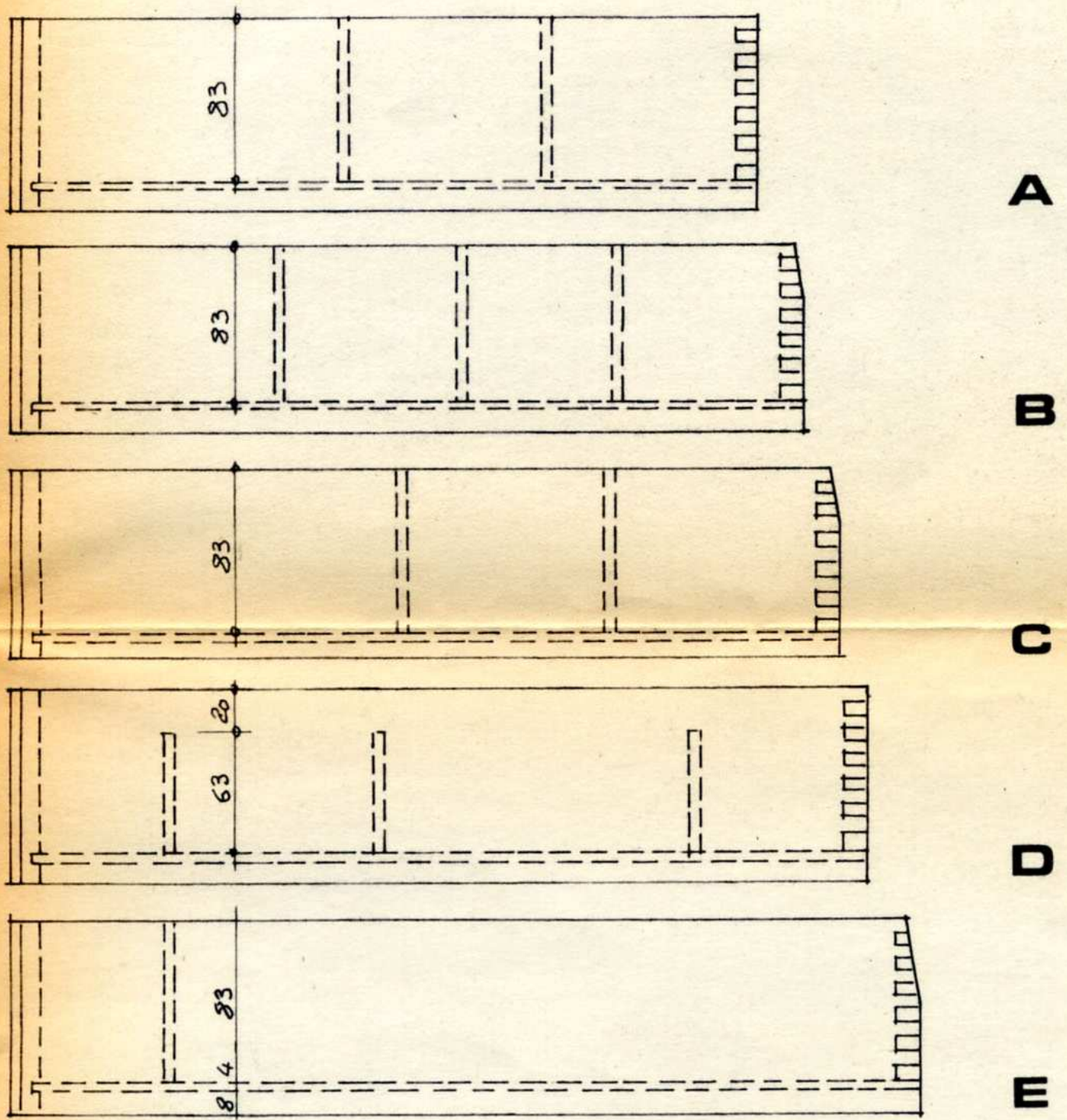


Tiroir D



Details grandeur





Cotés des tiroirs